

# Adjectives



```
graph TD; A[Adjectives] --> B[Short adjectives]; A --> C[Long adjectives]; B --> D["adj.+ er+ than"]; D --> E["Tall – short – small – big  
–clear -simple -"]; E --> F["Ahmad is taller than Ali."]; E --> G["His handwriting is clearer than yours."]; C --> H["more+ adj. + than"]; H --> I["beautiful– correct–  
comfortable–difficult -"]; I --> J["Math is more difficult than English."]; I --> K["Sofa is more comfortable than chair."];
```

## Short adjectives

**adj.+ er+ than**

Tall – short – small – big  
–clear -simple -

Ahmad is **taller** than Ali.

His handwriting is  
**clearer** than yours .

## Long adjectives

**more+ adj. + than**

beautiful– correct–  
comfortable–difficult -

Math is **more difficult**  
than English.

Sofa is **more comfortable** than chair.

# Comparatives: Short adjectives

Short adjectives ...	Spelling rules	Examples
Usually	+ <b>er</b>	slow → slower fast → faster tall → taller
Ending in -e	+ <b>r</b>	large → larger nice → nicer
Some two-syllable adjectives, especially ending in -y	-y → -i + <b>er</b>	hungry → hungrier happy → happier funny → funnier
Ending in a vowel + a consonant	double the consonant + <b>er</b>	big → bigger fat → fatter fit → fitter



# COMPARATIVE ADJECTIVES

## One-syllable adjectives



long – longer

tall – taller

straight – straighter

large – larger

big – bigger

hot – hotter

## Two-syllable adjectives



honest – more honest

famous – more famous

happy – happier

crazy – crazier

narrow – narrower

gentle – gentler

## Three or more syllables

expensive – more  
expensive

dangerous – more  
dangerous

popular – more  
popular

beautiful – more  
beautiful

confident – more  
confident

difficult – more  
difficult

## Irregular adjectives



good – better

many – more

bad – worse

little – less

far – farther

far – further



## COMPARATIVE AND SUPERLATIVE ADJECTIVES

A



big



bigger



the biggest

A bear is a **big** animal.

A camel is **bigger** than a bear.

An elephant is **the biggest** animal of all.

B



100.000 \$

expensive



200.000 \$

more expensive



300.000 \$

the most expensive

The red car is **expensive**.

The grey car is **more expensive** than the red car.

The green sports car is **the most expensive** of all.

C



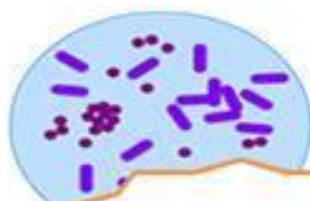
85 points

good



90 points

better



100 points

the best

My maths is **good**.

My geography is **better** than my maths.

My biology is **the best** school subject of me.



TO BE + ADJECTIVE

+ John is old.



John

TO BE + NOT + ADJECTIVE

- John is not young.

+ He is happy.

? Is he happy?



Short  
Answer

Yes, he is.  
No, he isn't.

TO BE + ADJECTIVE

I	am	tired.
You	are	nervous.
He	is	tall.
She	is	happy.
It	is	round.

We	are	cold.
You	are	hot.
They	are	angry.

# What is an adjective?

BLUE



COLD



HAPPY



BLUE, COLD, AND HAPPY ARE ADJECTIVES

An adjective is a describing word.

An adjective gives more information about something.

An adjective generally describes a noun.\*

\* A noun is a person, a thing, or a place.



The green monster

↑ adjective + noun

The monster is green

↑ to be + adjective

BE  
CAREFUL!

The green monster ✓

The monster green ✗